



# 1526 E 8th Street

Loveland

\$250,000

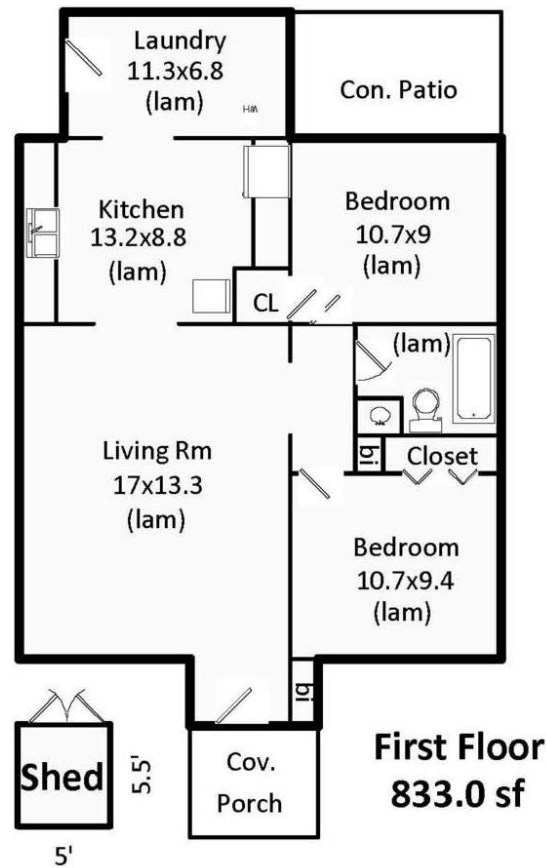
Charming, well kept, 2-bed, 1-bath, brick ranch house on a large lot with alley access.

Updated bathroom, windows, floors, and roof. Newer driveway, walkway, and concrete patio.

Enjoy BBQ's in the backyard with plenty of space for yard games.

Perfect for a first time homeowner, retiree, or investor. Property is zoned R3E.





**GENERAL INFORMATION**

MLS ..... 850642

Living Room . . . 17 x 13 Main Level  
 Kitchen . . . . . 13 x 9 Main Level  
 Laundry Room . . 11 x 7 Main Level  
 Master Bedroom . 11 x 9 Main Level  
 Bedroom 2 . . . . 10 x 8 Main Level  
 Lot Size . . . . . 7,100  
 Approx Acres . . . . . 0.16  
 Electric . . . . . City of Loveland  
 Water . . . . . City of Loveland  
 Gas . . . . . Xcel Energy  
 Taxes/Yr . . . . . \$357/17  
 Bedrooms . . . . . 2  
 Bathrooms . . . . . 1  
 Subdivision . . . . . Water Addition  
 Style . . . . . Ranch  
 Construction . . . Wood/Frame, Brick/  
 Brick Veneer  
 Floors . . . . . Laminate  
 Heating . . . . . Forced Air  
 Cooling . . . . . Central A/C

**INCLUSIONS**

Electric Range/Oven, Refrigerator,  
 Microwave, Clothes Washer, Clothes  
 Dryer

**SCHOOLS**

Elementary . . . . . Trucott  
 Middle/Jr. . . . . Bill Reed  
 High School . . . . . Thompson Valley  
 District . . . . . Thompson R2-J

2 Bedrooms - 1 Bathrooms

Information herein deemed reliable but not guaranteed. Distance and measurements are approximate and subject to correction. See our listings at [www.thegroupinc.com](http://www.thegroupinc.com).



Marketed by:  
**Blas Estrada**  
 Broker Associate/Partner CMRS  
 970-324-6177 Cell  
 970-461-7130 Direct  
 970-613-0700 Office  
[bestrada@thegroupinc.com](mailto:bestrada@thegroupinc.com)  
[www.blasestrada.com](http://www.blasestrada.com)

