



4735 Hahns Peak Dr #101

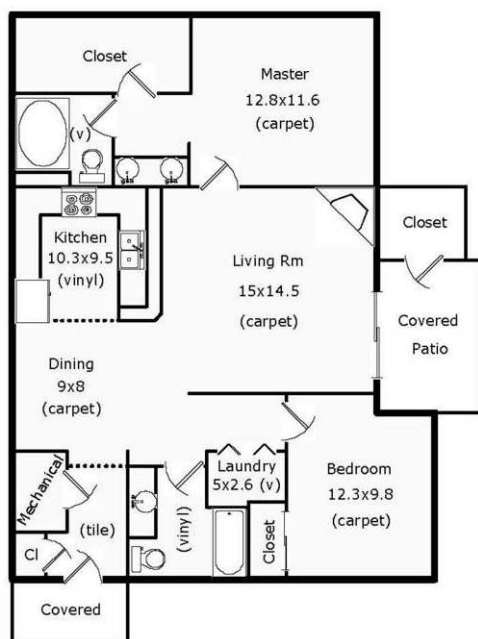
Loveland, CO

\$249,000

New appliances and new carpet. This two bed, two bath, first floor condo has an open floor plan, a well-sized master bedroom with a suite style master bath including double vanity sinks and large bathtub.

Biking trails around Equalizer lake and Houts reservoir. Close to Centerra shops and restaurants. Quick access to I-25.





4735 Hahns Peak Drive #101
Loveland, CO
Total Sq Ft: 1041
Total Finished Sq Ft: 1041
 *SF taken from interior dimensions

GENERAL INFORMATION

Living Room . . . 15 x 15 Main Level
 Dining Room . . . 9 x 8 Main Level
 Kitchen 10 x 10 Main Level
 Master Bedroom 13 x 12 Main Level
 Bedroom 2 . . . 12 x 10 Main Level

Electric City of Loveland
 Water City of Loveland
 Gas Xcel Energy
 Taxes/Yr \$1,090.42/17
 Bedrooms 2
 Bathrooms 2
 Subdivision Lakeshore at Centerra
 Style 1st Floor Condo
 Construction Wood/Frame
 Floors Carpet, Vinyl
 Heating Forced Air
 Cooling Central A/C, Ceiling Fan

INCLUSIONS

Refrigerator, Electric Range/Oven,
 Dishwasher, Microwave, Clothes
 Washer, Clothes Dryer

SCHOOLS

Elementary High Plains
 Middle/Jr. High Plains
 High School Mountain View
 District Thompson R2-J

2 Bedrooms - 2 Bathrooms
 MLS# 851379

Information herein deemed reliable but not guaranteed. Distance and measurements
 are approximate and subject to correction.
 See our listings at www.thegroupinc.com.



Marketed by:
Blas Estrada
 Broker Associate/Partner CMRS
 970-324-6177 Cell
 970-461-7130 Direct
 970-613-0700 Office
bestrada@thegroupinc.com
www.blasestrada.com

