

Opening the Door to Your Dream

General Information
 Electric City of Loveland
 Water City of Loveland
 Gas Xcel Energy
 Taxes/Yr \$2,017/2017
 HOA \$100/Quarter
 Bedrooms 3
 Bathrooms 4
 Garage 2 Car Attached
 Year Built 2002
 Subdivision Blackbird Knolls
 Style 2 Story

Construction Wood, Brick
Floors Carpet, Vinyl, Laminate
Heating Forced Air
Cooling Central A/C
Inclusions
 Range/Oven, Dishwasher, Microwave,
 Refrigerator, Washer/Dryer, All Window
 Coverings, Security System
Room Measurements
 Living Room 20 x 17

Dining Room 12 x 9
Kitchen 12 x 8
Master Bedroom 15 x 13
Bedroom 2 11 x 10
Bedroom 3 10 x 10
Office 13 x 12
Schools
 Elementary Carrie Martin
 Middle/Jr. Reed
 High School Thompson Valley
 School District Thompson R2-J

3830 Leopard Street
 Loveland

Welcome

Beautiful home with so many new touches!
 As you walk in the front door you will notice
 the main floor office. You then will stroll to
 the open/vaulted great room.



Tami K. Spaulding

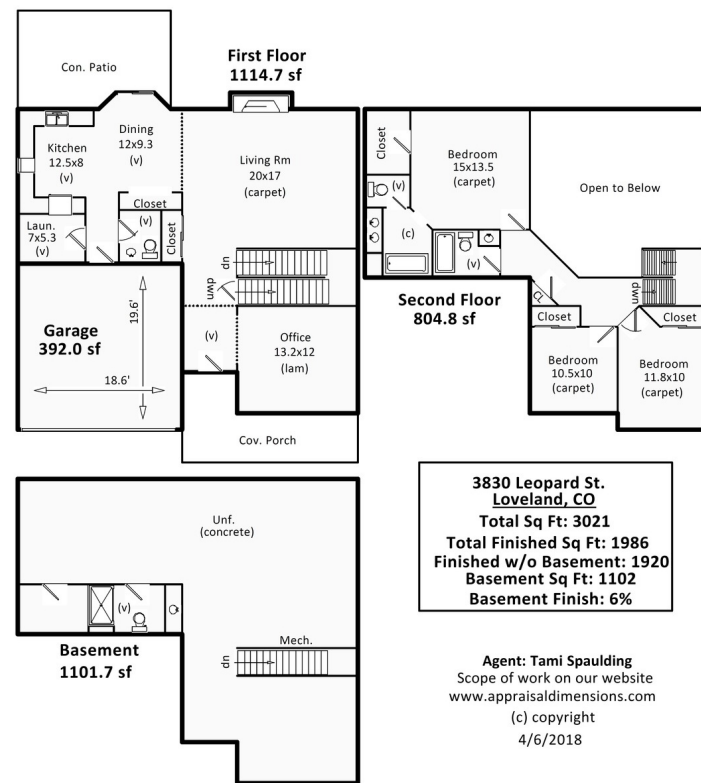
375 E. Horsetooth Road, Fort Collins, Colorado 80525
 Direct 970.377.6003 Office 970.223.0700
 tspaulding@thegroupinc.com www.Talk2Tami.com



All new interior paint along with Dream Home Engineered Flooring that is just amazing! Large kitchen with pantry all appliances stay. Brand new carpet has just been installed upstairs. Large windows everywhere to capture the sunshine. New patio door just installed.



Nice master suite with walk in and full bath. Back yard has had lots of love – don't miss the raised garden boxes on the west side of the home.



**3830 Leopard St.
Loveland, CO**
Total Sq Ft: 3021
Total Finished Sq Ft: 1986
Finished w/o Basement: 1920
Basement Sq Ft: 1102
Basement Finish: 6%

Agent: Tami Spaulding
 Scope of work on our website
www.appraisaldimensions.com
 (c) copyright
 4/6/2018

