

Welcome to the exclusive Pyrenees Neighborhood of French Country Living!



*4425 Chateau Drive
Loveland*

\$480,600



Dave Trujillo
Broker Associate/Partner
970-222-0340 Cell
dtrujillo@thegroupinc.com





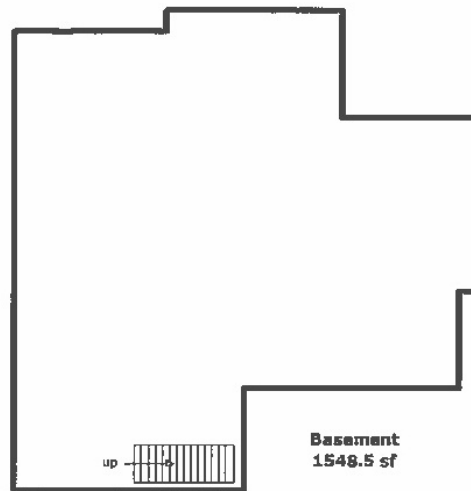
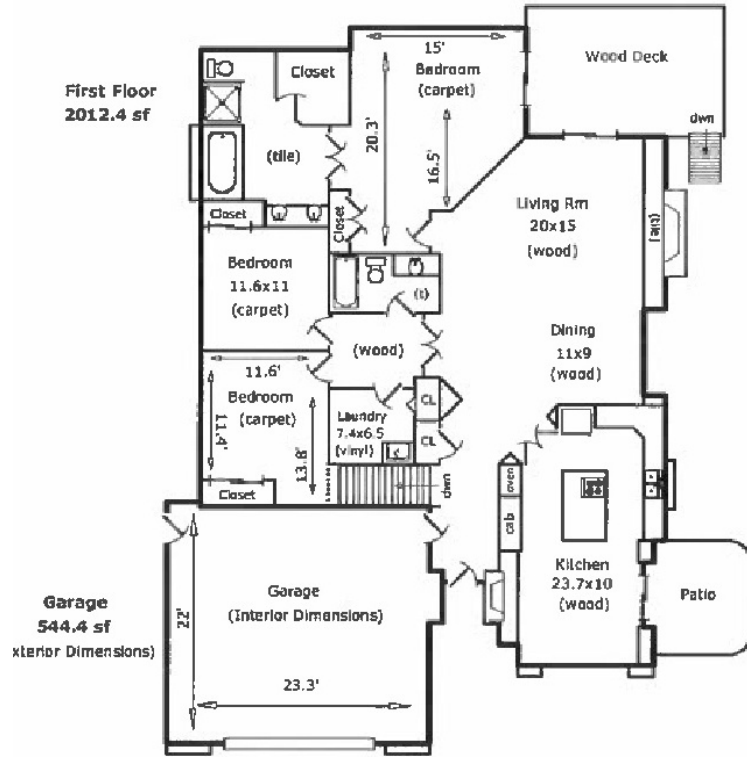
Call if you want to be the lucky new owner!

Meticulously cared for high quality custom home. This is one of the few homes backing to a conservation easement w/seasonal stream, wildlife & offers backyard privacy. The landscaping has been designed for ease of maintenance. Large private back deck & side patio off kitchen for true Colorado outdoor living. The like new interior features main level hardwood flooring in the entry, living, dining & kitchen areas. Gas fireplaces in both the living area as well as the amazing kitchen which also features a large island. Solid wood 4 panel doors. Cedar lined linen closet. Spacious master suite & full unfin daylight basement.

MLS # 852081
 Lot Size 10,048
 Approx Acres 0.28
 Electric City of Loveland
 Water City of Loveland
 Gas Xcel
 Taxes/Yr \$2,279/17
 Bedrooms 3
 Bathrooms 2
 Subdivision ... Brookridge Add
 Style 1 Story/Ranch
 Construction ... Wood/Frame, Stucco
 Floors Wood, Carpet, Vinyl
 Heating Forced Air
 Cooling Central Air, Ceiling Fan
 Year Built 1998

Inclusions
 Window coverings, electric range/oven, dishwasher, refrigerator, washer, dryer, microwave

Schools
 Elementary Edmondson
 Middle/Jr. Lucile Erwin
 High School Loveland District
 District Thompson R2-J



**4425 Chateau Dr
 Loveland, CO**
 Total Sq Ft: 3561
 Total Finished Sq Ft: 2012
 Finished w/o Basement: 2012
 Basement Sq Ft: 1549
 Basement Finish: 0%

Scope of Work is on our website
www.appraisaldimensions.com
 05/29/2018
 (c) Copyright

www.4425Chateau.thegroupinc.com



Information herein deemed reliable but not guaranteed. Distance and measurements are approximate and subject to correction. See our listings at www.thegroupinc.com.

